



# FIRST ENGLISH LUTHERAN CHURCH

3001 Whitis Avenue, Austin, Texas, 78705 • [www.felcaustin.org](http://www.felcaustin.org)

The mission of First English Lutheran Church is to proclaim the Word of God and the love of Jesus Christ to all people through our ministry of preaching, teaching and caring.

ECHOES Newsletter

Volume 47, Issue 3

March 2011

## FROM THE PASTOR

### On Worship: *Sending*



Pastor Mike Coffey

For my last reflection on worship I am writing about the Sending, the last part of the Eucharistic liturgy after Gathering, Word, and Meal. At first, it might seem simple: We have to end the service at some point! But like all good ritual, the way we do it matters.

The Sending is usually brief and includes a blessing, usually a song, and the dismissal. In some congregations, like FELC, we use this time to send Eucharistic ministers out to sick or homebound members, ensuring that they are included in the community's meal and life. I think it is extremely important that when the church gathers for worship, we remember the poor, weak, sick, and homebound: we do not forget or abandon those who are unable to join us. They are part of our community of faith, valued and loved.

Before leaving worship, we hear one more word of pure Gospel: blessing. Traditionally, the Aaronic blessing (Aaron was Moses' brother) from Numbers 6.

This beautiful biblical blessing pronounces the fullness of God's grace upon us. By the way, the Hebrew and Arabic word for blessing is "barak." Sound like anyone you know of?

I found this translation of the Aaronic blessing from the Hebrew, which helps bring out the great meanings of the Hebrew words:

*Yahweh will kneel before you presenting gifts  
and will guard you with a hedge of protection,  
Yahweh will illuminate the wholeness of his being toward you  
bringing order and he will beautify you,  
Yahweh will lift up his wholeness of being and look upon you  
and he will set in place all you need to be whole and complete.*

And then the final part of the liturgy, the dismissal: *Go in peace. Serve the Lord.* As tempting as it may be to escape real life through worship or religion, we are rightly sent back into it as God's people renewed and empowered.

In many ways, the dismissal, whether brief or extended, says everything we need to know about our life with God: know peace, and serve God. We are sent out commanded to be at peace with God, ourselves, and the world (but only because we have received grace enough to be at peace in the eucharist). And only because of the peace of God in our hearts through Christ, we are called to serve. This is what Walter Brueggemann has called "joyful obedience." We serve God joyfully because of God's grace, without fear.

But how does one do that outside in the real world? Simply, by loving others in Jesus' name. Loving our neighbor is the way we worship God in the world, until we return again to worship God in the liturgy shared by the community of faith in the sacramental presence of Christ by the Spirit's power. And the assembly says: *Thanks be to God!*

Visit Pastor Coffey's Web site at [www.michaelcoffey.org](http://www.michaelcoffey.org) for sermons, blog, and more.



## Ash Wednesday Worship

### March 9

12:15 P.M. Worship      12:45 P.M. Meal

7:00 P.M. Worship

Lent begins with the solemn Ash Wednesday observance. It is a time of honest repentance, confrontation with our own mortality, returning to a deep trust in God, and preparation for the renewal that comes through the Paschal Mystery of Jesus' death and resurrection. The noon gathering includes a soup and sandwich lunch following the service.

## From the Faith Formation Coordinator



Henri Atkinson

Spring brings an addition to my article starting in April. I am interviewing our young families so that all of us can get to know them better. So be looking forward to it and my young families be prepared.

**LENTEN RETREAT is March 25 and 26**, so make sure it is on your calendar! The focus is on the past and its connection to our future.

We have 8 young people and 2 adults going to The Heifer Project in Arkansas in June. We will be having a fund raiser as well as our annual Easter Breakfast to help them pay their way. So save your pennies and help our young people have a great experience in Arkansas.

**Lenten Adventure  
March 25 & 26  
FELC Fellowship Hall  
Details on Page 7**

I am perusing a new curriculum for our Sunday School that will help us focus on our anniversary year starting in July. So far I am impressed and know the kiddos will be too.

As the world is blooming around us know too that we are blooming as well!

Yours in Christ,  
Henri Atkinson

## From the Church Council

### SUMMARY

— Submitted by Joe Cain, COUNCIL SECRETARY

#### HIGHLIGHTS OF THE FEBRUARY 21 COUNCIL MEETING:

In his report, the Pastor noted that he interviewed applicants for the congregation's 45<sup>th</sup> vicar in Chicago and submitted his preferences. He expects that an assignment will be made in mid-April.

Nancy Neuse reported that for the 75<sup>th</sup> Anniversary Celebration, five events are planned: July 19, 2011 for the Anniversary Date Prayer Vigil, October 1 and 2, 2011 for the Anniversary Celebration Weekend, February 12, 2012 for the Fine Arts Festival, and April 29, 2012 for the Chicken Barbecue kick-off of the congregation's Community Outreach Mission. The 75<sup>th</sup> Anniversary celebration will end with a prayer service on July 18, 2012.

Barbara Schutz reported that a date of June 24 through 26, 2011 has been set for the Women's Retreat at Cedar Brake in Belton, Texas.



### SAVE THE DATE

**October 1, 2011** – FELC Anniversary Weekend  
special activities planned

**October 2, 2011** – FELC 75<sup>th</sup> Anniversary Worship  
followed by meal in the Fellowship Hall

#### CHURCH STAFF

##### PASTOR

**MICHAEL COFFEY**, ext. 11  
pastor@felcaustin.org

##### VICAR/INTERN

**CAROLYN ALBERT**, ext. 12  
vicar@felcaustin.org

##### ADMINISTRATIVE ASSISTANT

**ELE CLAY**, ext. 10  
office@felcaustin.org

##### FAITH FORMATION COORDINATOR

**HENRI ATKINSON**, ext. 19  
henr1\_tx-family@yahoo.com

##### DIRECTOR OF MUSIC

**DONALD MEINEKE**, ext. 18  
drm3680@yahoo.com

##### SUNDAY NURSERY ATTENDANT

**SAMMIE SHEPPARD**

##### CUSTODIANS

**TERESA/JESUS DEL AGUILA**  
**SONIA ESPINOZA**

#### CHURCH COUNCIL

##### PRESIDENT

Bonnie Northcutt

##### VICE-PRESIDENT

Sage Weber

##### SECRETARY

Joe Cain

##### MEMBERS

Henri Atkinson  
Alison Derick-Northcutt  
Angelo Ferrazzano  
Shelly Kronbergs  
Kristin Mondy  
Nancy Neuse  
Terry Porter  
Barbara Schutz  
Teresa Tice-Boggs

##### TREASURER

Dana MacLaren

##### FINANCIAL SECRETARY

David Austin

#### CHILD DEVELOPMENT CENTER

(512) 478-5424

##### DIRECTOR

**TERESA KAPELLE**

tkapelle@firstenglishcdc.org

##### ASSISTANT DIRECTOR

**SHANNON BALL**

sball@firstenglishcdc.org

#### FELC OFFICE HOURS

Monday–Thursday 9:30 A.M. to 4:30 P.M.  
Friday 9:30 A.M. to 3:30 P.M.

## FROM THE VICAR

... in the details—answers to some questions about Lenten Worship



Vicar Carolyn Albert

**D**ear Friends,

As Lent is upon us, I thought I'd take this opportunity to do some housekeeping and make sure the of the details about our midweek Lenten worship gatherings are clear.

As I shared last month, my internship project has been planning worship in a different format for Wednesday services this Lent, based on the experience of worship in the early church – namely worship in people's homes. Following are some questions I have heard and some answers that I hope will be helpful.

*When and where is worship happening?*

Worship will be on Wednesdays from 6:30 to 8:00 P.M. and will include dinner. Teresa Tice-Boggs, Nancy and David Neuse, and Fred and LaRu Woody have graciously agreed to host gatherings in their homes for 5 weeks in Lent, March 16 through April 13. Worship will begin close to 6:30 to allow the fullest participation possible for those who might need to leave a little bit early.

*Where should I go? Should I go the same place every week?*

While someone from First English will likely have called you to make sure you know about the gathering closest to your home, you may certainly attend worship at any of the three locations based on what is most convenient for you. I would encourage people to attend the same gathering throughout Lent if they can, as the sense of community that will hopefully grow over these weeks will be an important part of the experience. The Neuses would like you to be aware that there are many steps at their home. If mobility is a concern for you, Teresa's or the Woodys' home might be a more safe and comfortable choice.

*Do I need to bring food, or is the meal provided?*

Consider the first week a potluck, so that hosts don't feel the need to provide both space and a meal (though, if you don't have time to cook, please don't let that stop you from coming!). After that, the group should feel free to decide how they want to deal with food preparation. Perhaps people can take turns bringing dinner. Perhaps it will be convenient to continue having potlucks. Or, maybe all would be grateful to order food if it's hard to find the extra time to cook. (A thought: It might help the hosts if everyone brings their own plates and silverware.)

*Do I need to R.S.V.P. or anything?*

This is not required. However, you may want to consider

calling the member at whose house you plan to worship. This might help them be sure of having enough chairs set up, etc. Their addresses and phone numbers can be found on the posters outside the Sanctuary and in the Fellowship Hall, along with a map showing the locations of their homes for your reference.

*What will worship be like?*

This is partly up to the leaders at each house, who will be congregation members. (Pastor Mike and I will each attend worship at one of the sites each week, but we will not be the primary leaders of worship.) The basic structure will be: gathering together with song and prayer; reading from scripture and reflecting together; sharing a table prayer and food; having a closing blessing and sending ritual.

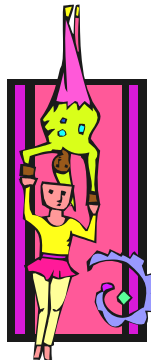
*So we won't have soup suppers and worship together at church on Wednesdays?*

Not this year. While we value the fellowship of that gathering, for this year we are exploring the richness of another way to gather and encounter God. We will, of course, still gather as a whole community on Sunday mornings throughout the season.

I am very excited to share this experience with you. I also want everyone to feel welcomed to participate in this Lenten journey. If anything is unclear to you, please don't hesitate to be in touch with me!

Find **Vicar Albert's blog** for sermon manuscripts and general musings at <http://liveactionliturgy.blogspot.com>.

## Fastnacht—Feasting Fools Pancake Supper and Variety Show



**TUESDAY, MARCH 8**

**6:00 P.M. – Pancake Supper**

**7:00 P.M. – Variety Show**

The time has come again, my friends ... to feast and laugh and celebrate before the solemn fast of Lent!

Bring:

Your talents to perform in the variety show or your favorite pancake topping for our pancake topping buffet (*with a reward for the toppings*

voted "best" and "weirdest") or just your appetite and eagerness to be entertained!

If you wish to perform in the variety show or help in any other way, contact Vicar Carolyn ([vicar@felcaustin.org](mailto:vicar@felcaustin.org) or 512-478-1933)!



# March 2011

Visit First English Lutheran on the Web at [www.felcaustin.org](http://www.felcaustin.org) for more information and the current activity schedule on our Google calendar.

## SUNDAY

## MONDAY

## TUESDAY

## WEDNESDAY



Daylight Savings Time Begins  
**Sunday March 13**  
 Set your clocks forward 1 hour before  
 you go to bed on Saturday evening.

### MARCH 6

**8:30 A.M. AND 11:00 A.M.**  
 Worship (SY)

### 9:45 A.M.

Children's Sunday School (FH)  
 Adult Sunday School (PL)

### 12:15 P.M.

Confirmation Meeting (LB)

### 1:45 P.M.

FELC Team on CROP Walk (WEL Park)

### MARCH 13

**8:30 A.M. AND 11:00 A.M.**  
 Worship (SY)

### 9:45 A.M.

Children's Sunday School (FH)  
 Adult Sunday School (PL)

### 12:30 P.M.

Male Spirituality Meeting (LB)

### 12:30 P.M.

Vicar Committee Meeting (PL)

### MARCH 20

**8:30 A.M. AND 11:00 A.M.**  
 Worship (SY)

### 9:30 A.M.

Green Team Meeting (LB)

### 9:45 A.M.

Children's Sunday School (FH)  
 Adult Sunday School (PL)

### MARCH 27

**8:30 A.M. AND 11:00 A.M.**  
 Worship (SY)

### 9:45 A.M.

Children's Sunday School (FH)  
 Adult Sunday School (PL)

### 12:15 P.M.

Confirmation Meeting (LB)

### 3:00 P.M.

CDC Parent Workshop (PL)

### MARCH 7

### 9:00 A.M.

Monday Ministry (SY)

### 7:00 P.M.

Heritage Association (FH)

### MARCH 14

### 9:00 A.M.

Monday Ministry (SY)

### 6:30 P.M.

Spirituality in Movies (PL)

### MARCH 21

### 9:00 A.M.

Monday Ministry (SY)

### 7:00 P.M.

Congregation Council (PL)

### MARCH 28

### 9:00 A.M.

Monday Ministry (SY)

### MARCH 1

### 8:00 A.M.

Lutheran pastors text study (LB)

### NOON

Prayer Circle (LB)

### 6:00 P.M.

CDC Board (PL)

### MARCH 8

### 8:00 A.M.

Lutheran pastors text study (LB)

### NOON

Prayer Circle (LB)

### 6:00 P.M.

Fastnacht: Pancake Supper  
 And Variety Show (FH)

### MARCH 15

**SUBMISSION DEADLINE FOR  
 APRIL ECHOES**

### 8:00 A.M.

Lutheran pastors text study (LB)

### NOON

Prayer Circle (LB)

### MARCH 22

### 8:00 A.M.

Lutheran pastors text study (LB)

### 9:30 A.M.

Women's Bible Study (PL)

### NOON

Prayer Circle (LB)

### MARCH 29

### 8:00 A.M.

Lutheran pastors text study (LB)

### NOON

Prayer Circle (LB)

### LOCATION LEGEND

FH = FELLOWSHIP HALL

LB = LIBRARY

PL = PARLOR

SY = SANCTUARY

TC = TRANSEPT CHAPEL

### MARCH 2

### 10:00 A.M.

CDC Chapel (SY)

### 10:30 A.M.

Companions Group

### 12:30 P.M.

Prime Timers (FH)

### 7:00 P.M.

Learning Ministry

### 7:00 P.M.

Choir Rehearsal (S)

### MARCH 9

**ASH WEDNESDAY**

### 10:00 A.M.

CDC Chapel (SY)

### 10:30 A.M.

Companions Group

**12:15 P.M. AND 7:00 P.M.**

Ash Wednesday V

### MARCH 16

### 10:00 A.M.

CDC Chapel (SY)

### 10:30 A.M.

Companions Group

### 6:30 P.M.

Lenten Worship (L)

### MARCH 23

### 10:00 A.M.

CDC Chapel (SY)

### 10:30 A.M.

Companions Group

### 6:30 P.M.

Lenten Worship (L)

### 7:45 P.M.

Choir Rehearsal (S)

### MARCH 30

### 10:00 A.M.

CDC Chapel (SY)

### 10:30 A.M.

Companions Group

### 6:30 P.M.

Lenten Worship (L)

### 7:45 P.M.

Choir Rehearsal (S)





	THURSDAY	FRIDAY	SATURDAY
Worship (LB) (PL) (SY)	MARCH 3	MARCH 4	MARCH 5 9:00 A.M. Choir Retreat (Location TBD) Austin Central SDA (SY, PL, LB: 12:30 P.M. FH)
Worship (LB) 10 P.M. Worship (SY)	MARCH 10	MARCH 11	MARCH 12 9:00 A.M. Austin Central SDA (SY, PL, LB: 12:30 P.M. FH)
Worship (LB) n Homes)	MARCH 17	MARCH 18 9:15 A.M. Church Women United Board (PL) 6:30 P.M. 3 <sup>rd</sup> Friday Game & Fellowship Night (LB)	MARCH 19 9:00 A.M. Austin Central SDA (SY, PL, LB: 12:30 P.M. FH)
Worship (LB) n Homes) (SY)	MARCH 24	MARCH 25 6:00 P.M. Lenten Retreat (FH)	MARCH 26 8:30 A.M. Lenten Retreat (FH) 9:00 A.M. Austin Central SDA (SY, PL, LB: 12:30 P.M. FH)
Worship (LB) n Homes) (SY)	MARCH 31	<div data-bbox="667 1518 1526 2003" data-label="Complex-Block"> <h2 style="text-align: center;">Thank You</h2> <p style="text-align: center;">« TO »</p> <ul style="list-style-type: none"> <li>★OUR SUNDAY SCHOOL CHILDREN who helped set up, serve, and clean up during our Annual Meeting.</li> <li>★CHARLIE BOAS for helping to make Scout Sunday such a success.</li> <li>★CLIFF ROBERTS AND ALL WHO HELPED replace the sump pump.</li> </ul> <p>You are invited to submit the names of those whose kind and thoughtful actions would otherwise go unnoticed.</p> </div>	

**DROP-OFF TIMES FOR STYROFOAM® MATERIALS**  
The next times for Styrofoam® drop-off are  
**April 6 and April 13.** Look for the two large blue  
containers in the hallway off the North Transept.

## Mid-week Lenten Worship Begins March 16!

*Come Lord Jesus...*

### Be Our Guest...



This year during Lent you are invited to **Wednesday worship from 6:30–8:00 P.M.** at the home of an FELC member in your area. Your choice of **3 locations** to attend for the 5 weeks of Lent are:

- David and Nancy Neuse (South)
- Teresa Tice-Boggs (North)
- Fred and LaRu Woody (Central)

Groups will gather for worship and a meal in the manner of the ancient church.

Questions? Call or e-mail Vicar Carolyn: (512) 478-1933, vicar@felcaustin.org

## Male Spirituality Meeting and Retreat



The next male spirituality group meeting is **Sunday, March 13 at 12:30 P.M. in the Library.** The group will conclude its study of “The Hidden Spirituality of Men.” Lunch will be provided. All men of all ages are invited and encouraged to join.

**On Saturday, April 9, there will be a day long men’s retreat in Austin,** led by Pastor Coffey and Dr. Antonio Ramirez on male spirituality themes. Look for more details soon online and in the bulletin.

## From the CDC



Teresa Kapelle  
CDC Director

I am told that our childcare center was started in the seventies for current parishioners and as an outreach program of the church. The goal was to provide quality childcare to low SES families who might not normally be able to afford it.

I have heard tidbits of history from this time. Church volunteers worked in the classroom with the children while another volunteer cooked hot meals in the kitchen. I can visualize the literal arms of the church reaching out to the community.

It was such a tangible time to see the mission of the church at work. Now, forty years later, I feel the weight of the trust that the church has placed in us to carry out that mission.

Although it might look a little different than it did years ago, I still think that we carry out that mission—just in a more contemporary style. Church members still give many, many hours to us through serving on the Board, and I can’t even begin to tell you how often I call church members to help with a facilities problem in our Center.



We still have children in our care who we try to the best of our ability to help grow into healthy and productive members of our community. We model to our families and children ethical and moral behavior that we hope helps build the noble characters of our little ones. Yes, the economic status of our families have admittedly increased, but we are actively seeking Texas Rising Star accreditation, a process which will make our program available to families who have a lower economic status and allow for a tuition reimbursement of our services.

And please, we cannot even get started talking about Jennifer, who cooks such wonderful food for us and acts as a warm and happy crossing guard for all who pass into the church on a week day.

As a staff, we are grateful for the legacy that the church has given to us. Thank you.

Always a pleasure,  
Teresa

First English Lutheran  
Child Development Center  
(512) 478-5424  
tkapelle@firstenglishcdc.org



This June, we’re sending our third group of youth to Heifer Ranch in Arkansas. Six junior and senior high youths, along with Renee Carlson and Pastor Coffey, will share in a powerful global education

experience. The program introduces participants to the idea that one person can make a difference in ending hunger and poverty. **Be on the lookout for their trip fundraising efforts!**

### QUARTERS FOR HEIFER

Back in 2002, when our first group of youth went to Heifer Ranch, they brought back the quarter cylinder in the Narthex. Youth have been emptying it ever since and on February 20, our latest group of youth emptied the cylinder and put us over the \$3,000 donation threshold! Quarters add up! **Thanks to everyone who drops in their quarters!**

# Ancient Future

2011 FIRST ENGLISH LUTHERAN

## Lenten Retreat

# March 25 and 26

(this year no traveling—we're at the church)

### Friday evening, **March 25:**

#### 6:00 Dinner Theatre

Eat while we watch **WALL • E** projected on a screen in the Fellowship Hall, dinner-theater style and followed by discussion (movie starts at 6:30)—Homemade pizza and salad! The movie is for all ages, but there will be babysitting available for our kiddos during, and especially after, the movie.

### Saturday, **March 26:**

**YARPs (Young Adult Resource Persons)** will lead the children throughout the morning.

#### 8:30 Breakfast

#### 9:00 1<sup>st</sup> session

How the early church speaks to the church today

#### 10:15 Group preparation of the noon meal

(plus refilling coffee cups and snacking!)

#### 10:45 2<sup>nd</sup> session

**FaceChurch: relationships thru social media — connections and disconnections** (discussion for both those of us who participate and those of us who wonder what it's all about)

#### 12:00 Combined meal and worship

We'll build on our Lenten mid-week house gatherings

**No fees, just a free-will offering.**

And no registration, but *please* consider contacting us by Sunday, March 20 to help us plan!

(Renee Carlson: crsh@grandecom.net; Henri Atkinson: 255-7685)

## CONTINUE IN PRAYER FOR

**Family of Evelyn Butler**

**Mel Sikes**

**Billy Elliott**

**Debbie Martin Fox**, mother of Angela, a friend of the Atkinson family

**Danny Austin**, cousin of David Austin

**Don Larson & Family**, cousin of Monica Lund

**Jim Stockbridge**, husband of Andy MacLaren's step-sister Leigh

**Dennis Burroughs**, friend of Gratia Winship

**Princetta MacLaren**, step-mother of Andy MacLaren

**Michaelie Wiebe**, niece of Anne Wiebe

**Gene Steinmeyer**, uncle of Jill Essbaum

**Doug MacLaren**, father of Andy MacLaren

**James Steinmeyer**, uncle of Jill Essbaum

**Greg & Renee Heins & Family**, friends of Emily Atkinson

**Mindy, Charlotte & James**, friends of Monica Lund

**Mallie Coker**, friend of Katherine Houston

**Jarett Werley**, friend of Chris Billig

**Ki Norman**, friend of Monica Lund



## Prayer Circle

### TUESDAYS AT NOON

Take a break in your day for some very meaningful group prayer time, most Tuesdays at Noon in the church library. For information and special prayer requests, please call Barbara Schutz (328-0587) or Lois Holck (327-8501).

## Confirmation Class on Stewardship Gives to Great Ministries

Our confirmation class recently learned about stewardship of money. After reading some biblical texts about giving, each member of the class was given \$10 to give to a ministry that helps other people. The class gave \$20 to Heifer to purchase ducks, \$20 to the ELCA Malaria Campaign to purchase two mosquito nets for families, and \$10 for flood relief in Australia through the ELCA Disaster Relief.

**Great job, confirmands!**

## Loving Limits



Sunday, March 27th

3-5pm

First English Lutheran CDC  
3001 Whitis

HOW TO SAY "NO" WITH LOVE AND RESPECT,  
AND WHY IT'S IMPORTANT

Bethany Prescott M.A.

Parents • Couples • Schools



March 2011

## FIRST ENGLISH EVANGELICAL LUTHERAN CHURCH

3001 Whitis Avenue  
Austin, Texas 78705

PHONE: (512) 478-1933

FAX: (512) 478-5094

E-MAIL: [office@felcaustin.org](mailto:office@felcaustin.org)

[www.felcaustin.org](http://www.felcaustin.org)

## FIRST ENGLISH LUTHERAN CHURCH

### SPIRITUALITY IN MOVIES MONDAY, MARCH 14

At 6:30 P.M. In the Parlor

#### VOLUME 47, ISSUE 3

March 2011

ECHOES is a monthly publication of First English Evangelical Lutheran Church. Founded in 1936, the church is located at the corner of Whitis Avenue and 30th Street in the North University area of Austin.

#### PASTOR

Michael Coffey

#### VICAR/INTERN

Carolyn Albert



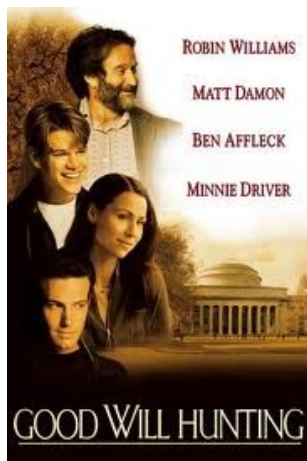
#### WORSHIP Schedule

8:30 A.M. Worship Service

9:45 A.M. Sunday School

11:00 A.M. Worship Service

Holy Communion is celebrated every Sunday at both worship services.



#### *Good Will Hunting*

This 1997 film, with Academy Award winning script written by Matt Damon and Ben Affleck, tells the story of a young man on the verge of transformation in his life, and the challenges and relationships he needs to become a new man, beyond his fears and insecurities. As always, you're invited to bring your own dinner to enjoy during the film, and you're encouraged to invite a friend. Popcorn is free!